



VIKING Yachting



VIKING RescYou™

A full range of leisure liferafts



VIKING LIFE-SAVING EQUIPMENT (America), Inc.

WHEN IT COMES TO **safety**
THINK VIKING™



You get all this with a VIKING liferaft:

- 1 The base material of every liferaft is the strong, yet flexible, natural rubber
- 2 Flourescent yellow canopy enhances visibility from a greater distance
- 3 Two separate buoyancy chambers each capable of supporting the maximum amount of passengers
- 4 Four 55 l. quick filling, weighted ballast bags offer maximum stability and prevent capsizing in heavy seas
- 5 SOLAS high-visibility retro-reflective tape on canopy, sides, buoyancy chambers and beneath the liferaft
- 6 Automatic SOLAS/USCG exterior strobe light and interior light
- 7 Easy slide zippers offer the ability to increase freeboard even when hands are cold
- 8 Internal and external lifelines
- 9 Rain water collector (on the RescYou™ Pro and RescYou™)
- 10 Boarding ramp with weighted ladder and handle ensures safe and quick evacuation
- 11 Large opening allows helicopter evacuation from within
- 12 Two openings increase the view of the horizon and provides cross-ventilation

Check all the liferaft
specific details
on the following pages >



**Self-rights
in seconds**

VIKING RescYou™ Pro

The ultimate liferaft for all types of cruising and sport fishing, where comfort and safety go hand in hand

VIKING RescYou™ Pro is our top of the line leisure liferaft. The automatic self righting function ensures the liferaft is immediately ready for boarding. In addition to its many advanced features, it offers generous space and headroom within.

The curtained windows provide an excellent view of the horizon without the need to open the canopy. The double blue canopy liner and inflatable double floor greatly aide in your protection from hypothermia.

VIKING RescYou™ Pro is ISO 9650-1 certified and meets ISAF requirements. Third party approved by DNV.



The automatically self-righting VIKING RescYou™ Pro is ready for boarding within seconds

Type of liferaft: RescYou™ Pro	Stowed dimensions LxWxH	Mounted in deck cradle(H)	Weight (incl. equipment)
4 person, container	31" x 22.6" x 11.6"	12.6"	88 lbs.
4 person, valise	30" x 16" x 14"		75 lbs.
6 person, container	31" x 22.6" x 12.6"	13.6"	101 lbs.
6 person, valise	30" x 16" x 14"		88 lbs.
8 person, container	31" x 22.6" x 12.6"	13.6"	116 lbs.
8 person, valise	30" x 16" x 18"		101 lbs.

** Dimensions for liferaft in valise are approximate.*



★★★★★

"This ISO liferaft reflects this meticulousness in design and construction, making this probably the best raft we tested..."

Sailing Today,
December 2011

VIKING RescYou™

The traditional liferaft for cruising and sport fishing on the open sea

The VIKING RescYou™ is the traditional liferaft in VIKING's Yachting Range. The large canopy opening and the inflatable boarding ramp with weighted ladder provides swift and easy boarding.

The insulated double inflatable floor provides hypothermia protection and the two canopy openings offer an excellent view of the horizon plus cross ventilation.

There are no compromises on safety when choosing a VIKING. The RescYou™ is ISO 9650-1 certified and meets ISAF requirements. Third party approval by DNV.



Type of liferaft: RescYou™	Stowed dimensions LxWxH	Mounted in deck cradle(H)	Weight (incl. equipment)
4 person, container	29.6" x 18" x 11.6"	12.6"	78 lbs.
4 person, valise	29.5" x 13" x 13"		64 lbs.
6 person, container	31" x 22.6" x 11.6"	12.6"	90 lbs.
6 person, valise	30" x 16" x 14"		77 lbs.
8 person, container	31" x 22.6" x 12.6"	13.6"	104 lbs.
8 person, valise	30" x 16" x 14"		85 lbs.

* Dimensions for liferaft in valise are approximate.



VIKING RescYou™ Coastal

The smart solution for coastal cruising and sport fishing near rescue points

VIKING RescYou™ Coastal is the smart solution if you boat in coastal or inland waters near rescue points. Lightweight and easy to transport and fit on board.

Exceeding requirements for ISO 9650-2 approval, this model includes a wide range of additional features including an automatically inflatable canopy, innovated boarding ramp providing swift and easy boarding, and full compliment of SOLAS flares.

The VIKING RescYou™ Coastal liferaft comes with a specifically designed coastal survival emergency pack that covers all basic needs in coastal rescue situations.

ISO 9650-2 certified and third party approved by DNV.



Type of liferaft: RescYou™ Coastal	Stowed dimensions LxWxH	Mounted in deck cradle(H)	Weight (incl. equipment)
6 person, container	29" x 18" x 10.6	11.6"	66 lbs
6 person, valise	29.5" x 13" x 13"		55 lbs

* Dimensions for liferaft in valise are approximate.

Liferaft contents

Life-Saving Equipment is packed according to relevant regulations. VIKING uses exclusively high quality products.

Emergency pack	Type E	Coastal	ISO I	ISO II	SOLAS B
SOLAS parachute rocket signals	2	2	2	2	2
SOLAS handflares	3	3	6	3	3
SOLAS flashlight	1	1	2	1	1
Extra batteries and bulb	1	1	2	2	1
Whistle	1	1	1	1	1
SOLAS/USCG signaling mirror	1	1	1	1	1
SOLAS/USCG drinking water (L)	3	0	9	3	0
SOLAS first aid kit	1	0	1	0	0
Anti-seasickness tablets	36	36	36	36	36
Bailer	1	1	1	1	1
Sponges	2	2	2	2	2
Survival instructions	1	1	1	1	1
Table of life-saving signals	1	1	1	1	1
Seasickness bags	6	6	6	6	0
SOLAS/USCG thermal survival bag	0	0	2	0	3
Emergency ration (kg)	0	0	3	0	0
Bellows/pump	1	1	1	1	1
Leak stopper	3	3	3	3	3
Sunscreen	0	0	2	0	0
Drinking cup	1	0	0	0	0
Safety tin opener	3	0	0	0	0
SOLAS fishing kit	1	0	0	0	0
Extra sea anchor and line	0	0	0	0	1
Scissors	1	0	0	0	0
SOLAS/USCG smoke signal	0	0	0	0	1
Repair kit	1	1	0	0	0
Liferaft Equipment	Type E	Coastal	ISO I	ISO II	SOLAS B
Instructions for use	1	1	1	1	1
Sea anchor with line	1	1	1	1	1
Buoyant safety knife	1	1	1	1	1
Paddles (pcs)	2	2	2	2	2
Rescue quoit with line	1	1	1	1	1
Water bags (set)	1	1	1	1	1



Storage and mounting

Choose either a valise or a container

Storage decision depends on your vessel's stowage capabilities. Liferafts should be stored where they are accessible and are able to be deployed within 60 seconds.

VIKING containers may be rail or deck mounted, the versatile easily portable valise should be stowed in a dry area below or in a waterproof deck box.

How to mount a liferaft container.

In addition to a manual, 3D animated mounting instruction films are available on www.VIKING-Yachting.com, YouTube or by scanning the QR codes.



Rail mount



Deck mount



Deck mount with HRU



Mounting brackets for VIKING liferafts

The mounting brackets are made of high quality stainless steel.

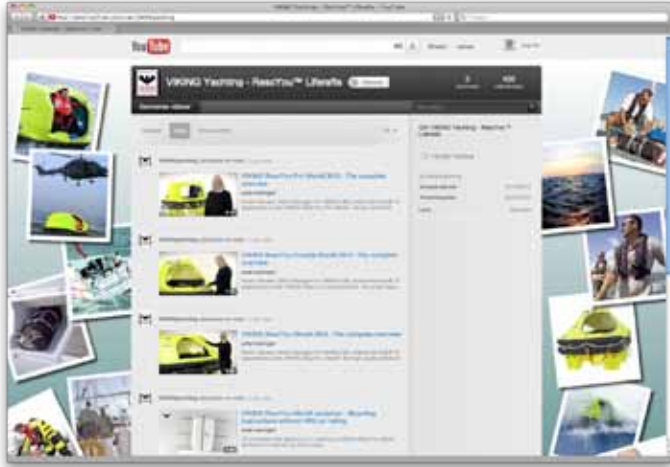
HRU – Hydrostatic Release Unit

A hydrostatic release unit, or HRU, enables liferafts to surface and inflate automatically when a vessel is sinking. Simple to install and releases at all angles – requiring only water pressure to activate.



VIKING on YouTube

Become a liferaft expert in minutes



Karen Hansen, VIKING's US sales manager, describes all the parts of a liferaft and takes you through the entire equipment list step by step.

There's a total of 3 educational videos – one for each liferaft in the RescYou™ range.

Further there are three 3D instructional films about mounting of a VIKING liferaft container.



[YouTube.com/user/VIKINGyachting](https://www.youtube.com/user/VIKINGyachting)

Global servicing network

We've got you covered wherever you are

VIKING follows the ISO recommendation of 3 year service intervals for leisure liferafts extending the lifetime and assuring it is in perfect working order.

VIKING provides a global network of 270 authorised servicing stations so no matter where you are you are able to access a VIKING servicing facility.

Servicing prices may vary around the world.

Locate the nearest servicing facility at www.VIKING-yachting.com.

DEALER

September 2013



VIKING LIFE-SAVING EQUIPMENT (America), Inc.

1400 NW 159 St., Suite 101 · 33169 Florida, Miami · U.S.A.
Tel: +1 (305) 614-5800 · Fax: +1 (305) 614-5810
e-mail: usasales@viking-life.com · www.VIKING-yachting.com

WHEN IT COMES TO
safety
— THINK VIKING —